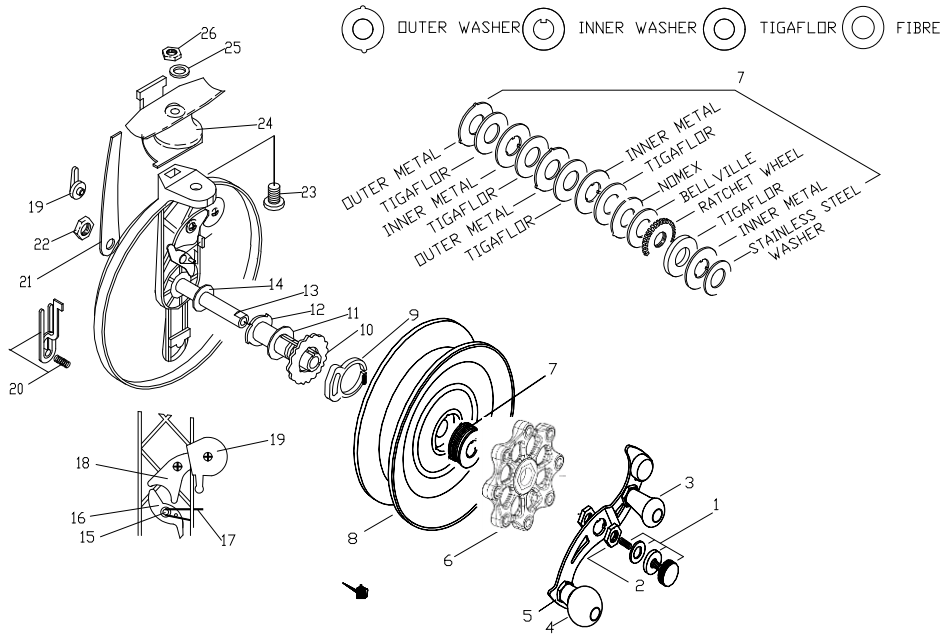


6500BCVRRRT

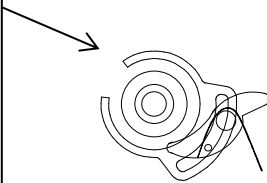


Correct assembly for silent drag pawl & cam

Ensure that Drag pawl pin is inside of silent drag cam slot or reel will click when winding.

Spring should be in front of pin for correct operation of the drag.

When assembling spool to reel have drag in OFF position.



Key	Part	Description	Key	Part	Description
1	R6E4	Spindle Screw Set	14	R6J6	Spindle Washer
2	R7F2	Handle-plate Lock Nut	15	R7M4	Drag Pawl Rivet
3	R4F5	Handle-Assy Rapid	16	R7J4	Drag Pawl
4	R4F7	Handle-Assy Power	17	R5G3	Drag Pawl Spring
5	R7E20	Handle-plate Assembly	18	R5K1	On/Off Cam
6	R7D15	Tristar Drag Nut	19	R7K10	On/Off Lever & Activ
7	R7B/C21	Drag Washer Set	20	R5E10	Fish Alert Button
8	R4A-6500	Spool Only	21	R2G13	Base Lock Spring
9	R7L1	Silent Drag Cam	22	R6F3	Dome Nut
10	R5B5	Fish Alert Wheel	23	R2D2	Base Bolt
11	R7H1	Friction Tube Washer	24	R2A8	Index Plate Assembly
12	R7A4	Friction Tube	25	R2L1	Base Bolt Washer
13	R6A18	Spindle	26	R2F1	Base Bolt Nut