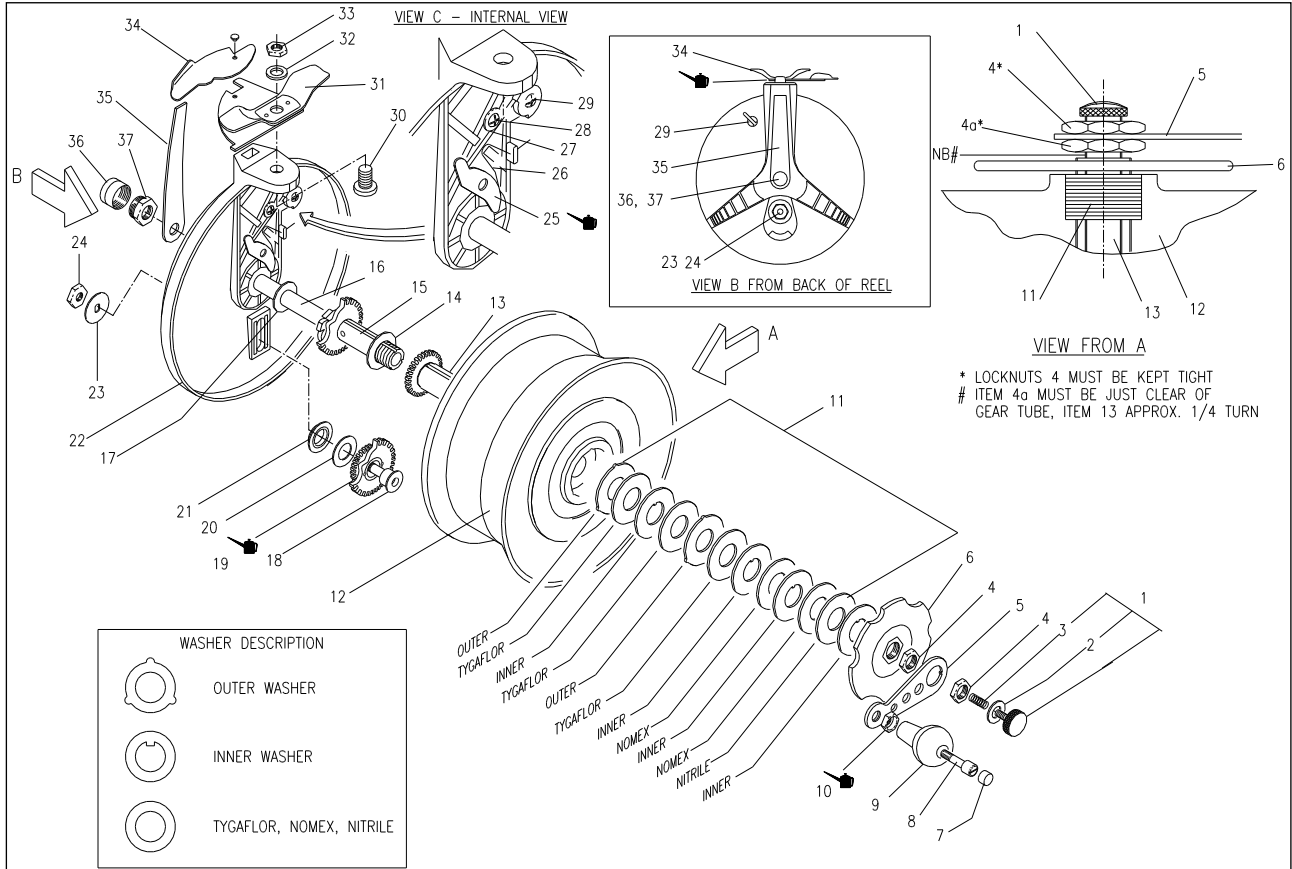


ALVEY REELS AUSTRALIA

650GRBC High Speed Retrieve Geared Reel



KEY	PART	DESCRIPTION	KEY	PART	DESCRIPTION
1	R6E4	SPINDLE SCREW ASSEMBLY	19	R8A1	IDLER GEAR ASSEMBLY
2	R6D2	SPINDLE D WASHER	20	R8B2	BRASS SHIM WASHER
3	R6C5	SPINDLE SPRING	21	R8B1	GEAR SPACER BUSH
4	R7F2	HANDLE PLATE LOCK NUT	22	R1A	BACK PLATE ASSEMBLY
5	R7E16	HANDLE PLATE	23	R8C1	STAINLESS STEEL SLIDE WASHER
6	R7D8	HAND WHEEL	24	D4G RM	IDLER SHAFT LOCK NUT
7	R4H2	PLUG	25	R7J7	DRAG PAWL
8	R4E9	HANDLE SCREW	26	R5G5	DRAG PAWL SPRING
9	R4D5	HANDLE	27	R5C5	DRAG ACTIVATOR BAR
10	R4G2	HANDLE SCREW LOCK NUT	28	R5C5	SCREW AND WASHER
11	R7B/C10	CLUTCH ASS. FIBRE AND METAL	29	R7K4	DRAG LEVER ASSEMBLY
12	R4A	SPOOL (WITHOUT FITTINGS)	30	R2D2	BASE BOLT
13	R8A3	GEAR TUBE AND GEAR ASSEMBLY	31	R2A2	BASE ASSEMBLY
14	R7H3	FIBRE WASHER	32	R2L1	BASE WASHER
15	R8A2	FRICTION TUBE AND GEAR ASSY	33	R2F1	BASE BOLT NUT
16	R6A25	SPINDLE	34	R2H2	BASE LEVER AND RIVET
17	R6J8	FIBRE WASHERS (2)	35	R2G13	BASE LOCK SPRING
18	R8B3	IDLER GEAR SHAFT	36	R6G2	GREASE CAP
			36/37	R6G1	GREASE CAP & GREASE NUT

SPECIAL NOTE Refer to view 'From A.' If the reel keeps tightening up and won't wind freely then the check that lock nut (Part 4) has not come loose or the distance between the lock nut and the stainless steel gear tube (Part 13) is too close. There must always be a small amount of clearance between (Part 13) the gear tube and the lock nut. Make sure both lock nuts are kept tight. (Loctite or super glue can be used on the threads to ensure this).

After stripping and cleaning, re-assemble as per the exploded view. Lubricate with light oil where oilcans are shown and on any moving parts. The main shaft can also be greased after assembly or any time by the use of the grease cap (Part 36) or oil down front end of spindle. (Remove Part 1 & 2 to make easier) this should be done regularly.

Clutch washers are a special material that does not need a lubricant to work smoothly and these are not affected by water.